



Test Report

No.: SZTY1209043968LP

Date: SEP 13, 2012

Page 1 of 6

WEBER-STEPHEN PRODUCTS LLC. SHENZHEN R.O
UNIT C&D, 27/F, TOWER A,
HONGLONG CENTURY PLAZA, NO.4002,
SHENNAN EAST ROAD, LUOHU DISTRICT, SHENZHEN

The following samples were submitted and identified by/on behalf of the client as:

Name of Product/Item : please see remark in 4th-5th pages
P.O. / Ref. No. : TT-P-08-011
Test Purpose : FOOD CONTACT TEST
Buyer : WEBER STEPHEN PRODUCTS LLC
Supplier : JETTERN CO. LTD.
Country of Origin : CHINA
Country of Destination : EUROPE, UNITED STATES
Sample Receiving Date : SEP 07, 2012
Testing Period : SEP 07, 2012 TO SEP 13, 2012

Test Requested		Result
1.	As specified by client, to determine extractable heavy metals content in submitted samples in accordance with the client's requirement	PASS

***** For Further Details, Please Refer to the Following Page(s) *****

Signed for and on behalf of
SGS-CSTC Ltd.

Qu Ping, Kiky
Section Manager

This document is issued by the Company subject to its General Conditions of Service printed overleaf, available on request or accessible at <http://www.sgs.com/en/Terms-and-Conditions.aspx> and, for electronic format documents, subject to Terms and Conditions for Electronic Documents at <http://www.sgs.com/en/Terms-and-Conditions/Terms-e-Documents.aspx>. Attention is drawn to the limitation of liability, indemnification and jurisdiction issues defined therein. Any holder of this document is advised that information contained hereon reflects the Company's findings at the time of its intervention only and within the limits of Client's instructions, if any. The Company's sole responsibility is to its Client, and this document does not exonerate parties to a transaction from exercising all their rights and obligations under the transaction documents. This document cannot be reproduced except in full, without prior written approval of the Company. Any unauthorized alteration, forgery or falsification of the content or appearance of this document is unlawful and offenders may be prosecuted to the fullest extent of the law. Unless otherwise stated the results shown in this test report refer only to the sample(s) tested and such sample(s) are retained for 30 days only.

Attention: To ensure the authenticity of testing / inspection report & certificate, please contact us at telephone: (86-755)83071443, or email: CN.Doccheck@sgs.com

SGS-CSTC Standards Technical Services Co., Ltd.
Shenzhen Branch, Toys Lab Factory.

2,4,5/F, Oastar Building, Zhongkang Road, Shangmeilin, Shenzhen, China 518049 t (86-755) 83114358 f (86-755) 83106190 www.cn.sgs.com
中国·深圳·上梅林中康路奥士达大厦2,4,5层 邮编: 518049 t (86-755) 83114358 f (86-755) 83106190 e sgs.china@sgs.com

Member of the SGS Group (SGS SA)

Test Report

No.: SZTY1209043968LP

Date: SEP 13, 2012

Page 2 of 6

Results:

1. Weber Metal Gill Extractable Heavy Metals Content Test

Method: Sample was prepared in 250ml 4% acetic acid at $22 \pm 2^\circ\text{C}$ for 24 hours

Analysis was performed by Inductively Coupled Plasma Mass Spectrometer (ICP-MS)

Test Item(s)		Result(s)			Client's Limit
		1			
		1 st cycle	2 nd cycle	3 rd cycle	
Alias No.		1	1	1	--
Tracing No.		1	1	1	--
Solution Concentration (mg/l)	Cr	0.031	0.020	0.017	--
	Ni	<0.01	<0.01	<0.01	--
	Cu	<0.01	<0.01	<0.01	--
	Hg	<0.01	<0.01	<0.01	--
	Cd	<0.01	<0.01	<0.01	--
	Pb	<0.01	<0.01	<0.01	--
	Sb	<0.01	<0.01	<0.01	--
Extractable Heavy Metal (mg/dm ²)	Cr	0.002	0.001	0.001	0.4
	Ni	ND	ND	ND	0.1
	Cu	ND	ND	ND	0.5
	Hg	ND	ND	ND	0.1
	Cd	ND	ND	ND	0.005
	Pb	ND	ND	ND	0.02
	Sb	ND	ND	ND	ND
Test Surface Area (dm ²)		4.20			--

This document is issued by the Company subject to its General Conditions of Service printed overleaf, available on request or accessible at <http://www.sgs.com/en/Terms-and-Conditions.aspx> and, for electronic format documents, subject to Terms and Conditions for Electronic Documents at <http://www.sgs.com/en/Terms-and-Conditions/Terms-e-Documents.aspx>. Attention is drawn to the limitation of liability, indemnification and jurisdiction issues defined therein. Any holder of this document is advised that information contained herein reflects the Company's findings at the time of its intervention only and within the limits of Client's instructions, if any. The Company's sole responsibility is to its Client, and this document does not exonerate parties to a transaction from exercising all their rights and obligations under the transaction documents. This document cannot be reproduced except in full, without prior written approval of the Company. Any unauthorized alteration, forgery or falsification of the content or appearance of this document is unlawful and offenders may be prosecuted to the fullest extent of the law. Unless otherwise stated the results shown in this test report refer only to the sample(s) tested and such sample(s) are retained for 30 days only.

Attention: To ensure the authenticity of testing / inspection report & certificate, please contact us at telephone: (86-755) 83071443, or email: CN.Doccheck@sgs.com

Test Report

No.: SZTY1209043968LP

Date: SEP 13, 2012

Page 3 of 6

Specimen Description:

1. Silvery metal shovel (A)

- Note:
- < = less than
 - mg/l = milligram per liter
 - mg/dm² = milligram per square decimeter
 - dm² = square decimeter
 - ND = Not Detected (lower than MDL)
 - MDL = Method Detection Limit = 0.001 mg/dm²

This document is issued by the Company subject to its General Conditions of Service printed overleaf, available on request or accessible at <http://www.sgs.com/en/Terms-and-Conditions.aspx> and, for electronic format documents, subject to Terms and Conditions for Electronic Documents at <http://www.sgs.com/en/Terms-and-Conditions/Terms-e-Document.aspx>. Attention is drawn to the limitation of liability, indemnification and jurisdiction issues defined therein. Any holder of this document is advised that information contained hereon reflects the Company's findings at the time of its intervention only and within the limits of Client's instructions, if any. The Company's sole responsibility is to its Client, and this document does not exonerate parties to a transaction from exercising all their rights and obligations under the transaction documents. This document cannot be reproduced except in full, without prior written approval of the Company. Any unauthorized alteration, forgery or falsification of the content or appearance of this document is unlawful and offenders may be prosecuted to the fullest extent of the law. Unless otherwise stated the results shown in this test report refer only to the sample(s) tested and such sample(s) are retained for 30 days only.

Attention: To ensure the authenticity of testing / inspection report & certificate, please contact us at telephone: (86-755)83071443, or email: CN.Doccheck@sgs.com

SGS-CTC Standards Technical Services Co., Ltd.
Shenzhen Branch Toys Laboratory

2,4,5/F, Oastar Building, Zhongkang Road, Shangmeilin, Shenzhen, China 518049 t (86-755) 83114358 f (86-755) 83106190 www.cn.sgs.com
中国·深圳·上梅林中康路奥士达大厦2,4,5层 邮编: 518049 t (86-755) 83114358 f (86-755) 83106190 e sgs.china@sgs.com

Member of the SGS Group (SGS SA)

Test Report

No.: SZTY1209043968LP

Date: SEP 13, 2012

Page 4 of 6

Remark:

Item Description / Item Number	Affect Part Number	Component	Material Specification	Trader Name	Raw Material Supplier Name
Fish Turner, WEBER ORIGINAL (Item 6673) Standard Spatula , WO, Blk; (Item# 6671) Compact 2 PC Set-Basic (Item# 6307) Stainless Steel Standard Fork, WO (18") (Item# 6615) Stainless Steel Standard Spatula, WO (18") (Item# 6620) Stainless Steel Barbecue Tool Set (2PCS), WO (Item# 6625) Stainless Steel Barbecue Tool Set (3PCS), WO (Item# 6630) Stainless Steel Portable 2PC Tool Set, WO (14") (Item# 6645)	(i) 40323000 (ii) 40337000 (iii) 85201 (iv) 40302700 (v) 40302900 (vi) 40303000	84911 84461 84463 84464 84822 85201	SS430; 0.048" [1.22mm]	DA-TSAI STAINLESS STEEL CO., LTD	Yieh United Steel Corp.
Stainless Steel Standard Fork, WO (18") - Target (Item# 7715) Stainless Steel Standard Spatula, WO (18") - Target (Item# 7720) Stainless Steel Barbecue Tool Set (3PCS), WO - Target (Item# 7730) Stainless Steel Portable 2PC Tool Set, WO (14") - Target (Item# 7745)					

This document is issued by the Company subject to its General Conditions of Service printed overleaf, available on request or accessible at <http://www.sgs.com/en/Terms-and-Conditions.aspx> and, for electronic format documents, subject to Terms and Conditions for Electronic Documents at <http://www.sgs.com/en/Terms-and-Conditions/Terms-e-Documents.aspx>. Attention is drawn to the limitation of liability, indemnification and jurisdiction issues defined therein. Any holder of this document is advised that information contained hereon reflects the Company's findings at the time of its intervention only and within the limits of Client's instructions, if any. The Company's sole responsibility is to its Client, and this document does not exonerate parties to a transaction from exercising all their rights and obligations under the transaction documents. This document cannot be reproduced except in full, without prior written approval of the Company. Any unauthorized alteration, forgery or falsification of the content or appearance of this document is unlawful and offenders may be prosecuted to the fullest extent of the law. Unless otherwise stated the results shown in this test report refer only to the sample(s) tested and such sample(s) are retained for 30 days only.

Attention: To ensure the authenticity of testing / inspection report & certificate, please contact us at telephone: (86-755)83071443, or email: CN.Doccheck@sgs.com

SGS-CSL Standards Technical Services Co., Ltd.
Shenzhen Branch, Toys Laboratory

2,4,5/F, Oastar Building, Zhongkang Road, Shangmeilin, Shenzhen, China 518049 t (86-755) 83114358 f (86-755) 83106190 www.cn.sgs.com
中国·深圳·上梅林中康路奥士达大厦2,4,5层 邮编: 518049 t (86-755) 83114358 f (86-755) 83106190 e sgs.china@sgs.com

Member of the SGS Group (SGS SA)

Test Report

No.: SZTY1209043968LP

Date: SEP 13, 2012

Page 5 of 6

Item Description / Item Number	Affect Part Number	Component	Material Specification	Trader Name	Raw Material Supplier Name
Standard Tongs, WO, Blk; (Item# 6672) Compact 2 PC Set-Basic; Item# 6307) Stainless Steel Locking Tongs, WO (18") (Item# 6610) Stainless Steel Barbecue Tool Set (2PCS), WO (Item# 6625) Stainless Steel Barbecue Tool Set (3PCS), WO (Item# 6630) Stainless Steel Portable 2PC Tool Set, WO (14") (Item# 6645) Stainless Steel Sausage Tongs, WO (18") (Item# 6650) Stainless Steel Pincer Tongs, WO (Item# 6655) Stainless Steel Locking Tongs, WO (18") - Target (Item# 7714) Stainless Steel Barbecue Tool Set (3PCS), WO - Target (Item# 7730) Stainless Steel Portable 2PC Tool Set, WO (14") - Target (Item# 7745) Stainless Steel Sausage Tongs, WO (18") - Target (Item# 7750)	(i) 40323200 (ii) 85206 (iii) 40303200 (iv) 40303300 (vi) 40302000 (vii)40302400	84823 84824 84928 84454 84453 84465 84466 84468 84467 84459 84460	SS430; 0.035" [0.90mm]	DA-TSAI STAINLESS STEEL CO., LTD	Yieh United Steel Corp.

This document is issued by the Company subject to its General Conditions of Service printed overleaf, available on request or accessible at <http://www.sgs.com/en/Terms-and-Conditions.aspx> and, for electronic format documents, subject to Terms and Conditions for Electronic Documents at <http://www.sgs.com/en/Terms-and-Conditions/Terms-e-Documents.aspx>. Attention is drawn to the limitation of liability, indemnification and jurisdiction issues defined therein. Any holder of this document is advised that information contained herein reflects the Company's findings at the time of its intervention only and within the limits of Client's instructions, if any. The Company's sole responsibility is to its Client, and this document does not exonerate parties to a transaction from exercising all their rights and obligations under the transaction documents. This document cannot be reproduced except in full, without prior written approval of the Company. Any unauthorized alteration, forgery or falsification of the content or appearance of this document is unlawful and offenders may be prosecuted to the fullest extent of the law. Unless otherwise stated the results shown in this test report refer only to the sample(s) tested and such sample(s) are retained for 30 days only.

Attention: To ensure the authenticity of testing / inspection report & certificate, please contact us at telephone: (86-755)83071443, or email: CN.Doccheck@sgs.com

SGS-CSL Standards Technical Services Co., Ltd.
Shenzhen Branch Toys Laboratory

2,4,5/F, Oastar Building, Zhongkang Road, Shangmeilin, Shenzhen, China 518049 t (86-755) 83114358 f (86-755) 83106190 www.cn.sgs.com
中国·深圳·上梅林中康路奥士达大厦2,4,5层 邮编: 518049 t (86-755) 83114358 f (86-755) 83106190 e sgs.china@sgs.com

Member of the SGS Group (SGS SA)

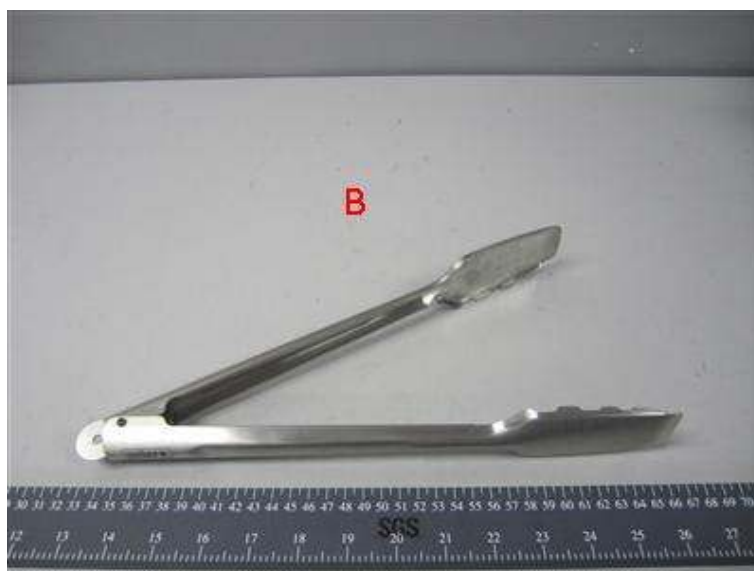
Test Report

No.: SZTY1209043968LP

Date: SEP 13, 2012

Page 6 of 6

Sample Photo:



SGS authenticate the photo on original report only

*** End of Report ***

This document is issued by the Company subject to its General Conditions of Service printed overleaf, available on request or accessible at <http://www.sgs.com/en/Terms-and-Conditions.aspx> and, for electronic format documents, subject to Terms and Conditions for Electronic Documents at <http://www.sgs.com/en/Terms-and-Conditions/Terms-e-Document.aspx>. Attention is drawn to the limitation of liability, indemnification and jurisdiction issues defined therein. Any holder of this document is advised that information contained herein reflects the Company's findings at the time of its intervention only and within the limits of Client's instructions, if any. The Company's sole responsibility is to its Client, and this document does not exonerate parties to a transaction from exercising all their rights and obligations under the transaction documents. This document cannot be reproduced except in full, without prior written approval of the Company. Any unauthorized alteration, forgery or falsification of the content or appearance of this document is unlawful and offenders may be prosecuted to the fullest extent of the law. Unless otherwise stated the results shown in this test report refer only to the sample(s) tested and such sample(s) are retained for 30 days only.

Attention: To ensure the authenticity of testing / inspection report & certificate, please contact us at telephone: (86-755)83071443, or email: CN.Doccheck@sgs.com

SGS-CSL Standards Technical Services Co., Ltd.
Shenzhen Branch Toys Laboratory

2,4,5/F, Oastar Building, Zhongkang Road, Shangmeilin, Shenzhen, China 518049 t (86-755) 83114358 f (86-755) 83106190 www.cn.sgs.com
中国·深圳·上梅林中康路奥士达大厦2,4,5层 邮编: 518049 t (86-755) 83114358 f (86-755) 83106190 e sgs.china@sgs.com

Member of the SGS Group (SGS SA)